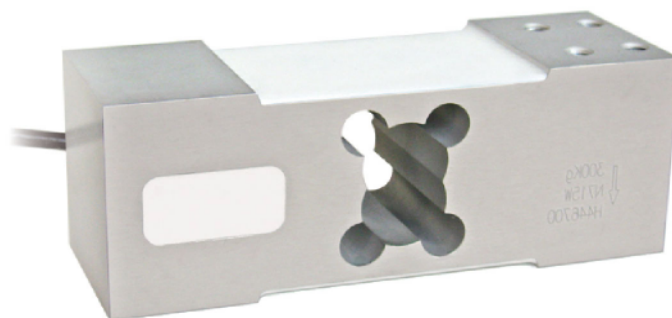




### Capacity from 50 kg to 500 kg



- ALUMINUM ALLOY
- COMBINED ERROR  $\leq \pm 0.02\%$  (0.017% C4)
- IP65 PROTECTION RATING

CAPACITY	kg	ACCURACY CLASS			PLATFORM (mm)	NET WEIGHT (kg)
		C3	C4			
50		•	–	•	600 x 600	1.7
100		•	–	•	600 x 600	1.7
150		•	•	•	600 x 600	1.7
200		•	•	•	600 x 600	1.7
300		•	•	•	600 x 600	1.7
500		•	•	•	600 x 600	1.7

ON REQUEST

### CERTIFICATIONS

- OIML R60 C3
- Complies with the Eurasian Customs Union regulations
- Equivalent of the CE marking for the United Kingdom
- Complies with United Kingdom regulations for legal for trade use

#### CERTIFICATIONS ON REQUEST

Calibration report

ATEX II 1G 2D (zone 0-1-2-21-22) (CE - )

IECEx (zone 0-1-2-20-21-22)

OIML R60 C4

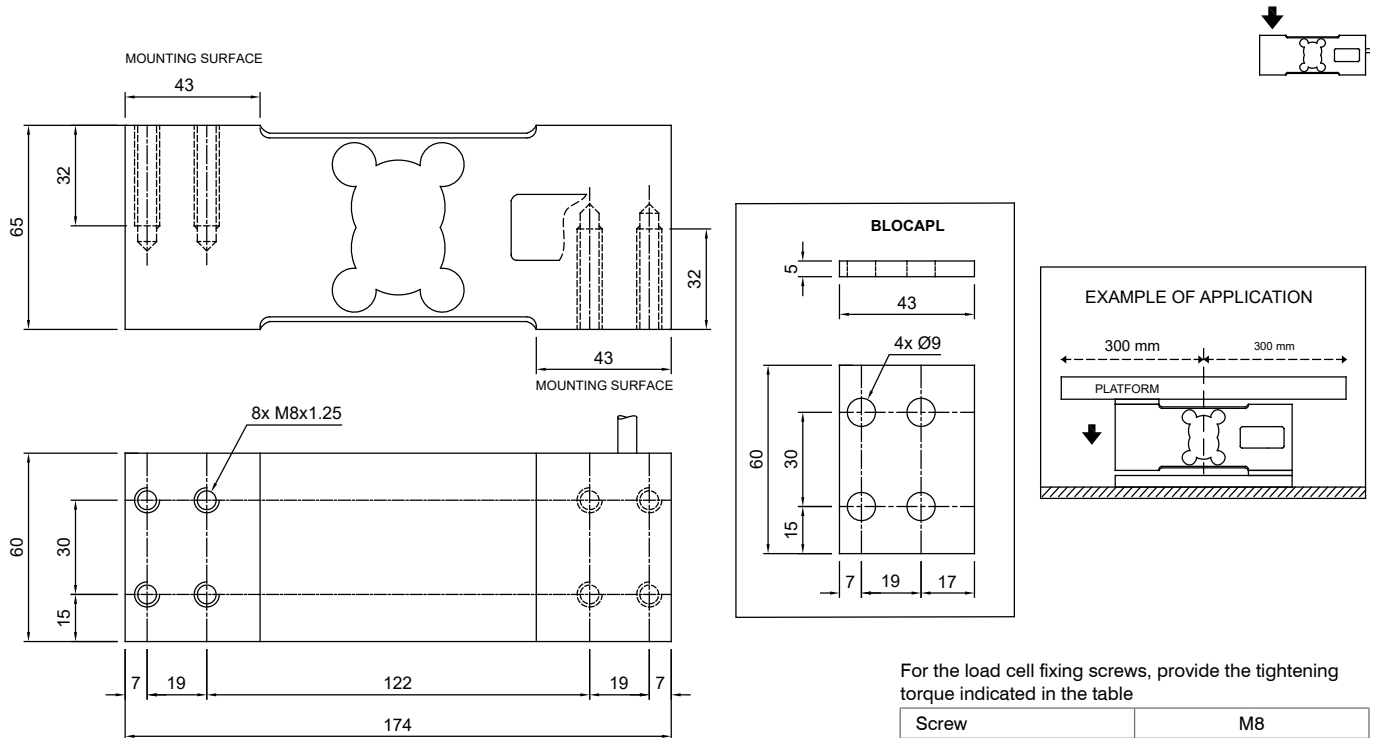
Complies with the Eurasian Customs Union regulations for use in potentially explosive atmospheres

Complies with Chinese market regulations for use in potentially explosive atmospheres

### COMPLEMENTARY ACCESSORIES

	DESCRIPTION	CODE
	Stainless steel and rubber waterproof kit (Ø 107x245 mm cable gland included)	IP68APL
	Stainless steel drawn block.	BLOCAPL

### DIMENSIONS (mm)



For the load cell fixing screws, provide the tightening torque indicated in the table

Screw	M8	
Screw class	6.8	8.8
Tightening torque	19 Nm	25 Nm

### TECHNICAL FEATURES

Material	Aluminum alloy		
OIML R60 Accuracy class • Verification intervals	C3 • 3000	C4 • 4000	
Nominal load (E max)	50 - 100 - 150 - 200 - 300 - 500 kg	150 - 200 - 300 - 500 kg	
Minimum verification interval (V min)	E max / 12000	E max / 15000	
Combined error	≤ ±0.02%	≤ ±0.017%	
Protection rating	IP65		
Rated output	2 mV/V ±10%	Input resistance	409 Ω ±6
Temperature effect on zero	0.0017% °C	Output resistance	350 Ω ±3
Temperature effect on span	0.0014% °C	Zero balance	≤ ±1%
Compensated temperature range	-10 °C / +40 °C	Insulation resistance	≥5000 MΩ
Operating temperature range	-35 °C / +65 °C	Safe overload (% of full scale)	150%
Creep at nominal load in 30 minutes	0.015%	Ultimate overload (% of full scale)	300%
Max supply voltage without damage	18 V	Deflection at nominal load	0.5 mm

### ELECTRICAL CONNECTIONS

Cable length	3 m
Cable diameter	6 mm
Cores	6 x 0.20 mm <sup>2</sup>

